

**Theatre Address**

1001 Calahoo Road

Spruce Grove, AB



**Contacts**

Box Office: (780) 962-8995  
Facility Rental: (780) 962-7631  
Technical Contact: (780) 962-4404

**Website**

[www.horizonstage.com](http://www.horizonstage.com)

**E-Mail**

[hstage@sprucegrove.org](mailto:hstage@sprucegrove.org)

**Seating Capacity**

318 fixed seats

**Unions**

No union affiliations

## STAGE DIMENSIONS

### Proscenium

Maximum width	46'	(14M)
Practical trim	38' 6"	(11.7M)
Fixed height	15' 6"	(4.7M)
Main curtain line to cyc	16' 6"	
Main curtain line to audience	24'	

### Thrust Opening

Maximum width between legs	32'	
Maximum width downstage	14'	(4.3M)
Stage floor to grid	20' 0"	(6.1M)
Cyclorama to wall behind stage	4' 0"	(1.2M)

### Stage Floor

Stage floor is covered in marmoleum  
Floor color is black throughout  
No traps available  
Floor is sprung

## FLY INFORMATION

The theatre is not equipped to fly anything



## STAGE DRAPES

### Valance (Main House Border)

66' 0" W x 13' 0" H

(21M X 4M)

Blue Velour, unlined

Fixed Trim: 15' 6"

(4.7M)

### Main Curtain

55' 9" W x 20' 0" H

(17M X 6.1M)

Blue Velour, unlined

Electrically powered traveler

Operated from control booth or stage right

Maximum speed in/out: 20 Seconds

### Legs

8' 0" W x 19' 6" H

(2.3M X 6.1M)

3 pairs

Black in colour

All legs are fixed, but may be relocated with sufficient notice

Middle pair of legs are a midstage traveler, hand drawn from stage right

### Borders

46' 9" W x 4' 0" H

(14M X 2M)

3 masking borders

Black in colour

### Upstage Traveller

34' 6" W x 19' 6" H

(10.5M X 5.9M)

Black velour, unlined

2 panels hand drawn from stage right

### Cyclorama

White, fixed upstage

### Scrim

The theatre is not equipped with any scrim

### Movie Screen

18' 0" W x 10' 0" H

Located directly behind and above the main curtain

Electrically operated from control booth or stage right

### Auxiliary Screens

2 @ 105" x 59" viewable area tension framed front projection screens

Located above each audience entrance

## STAGING EQUIPMENT

### Music Stands

8 black stands available upon request

### Pianos

A440 (Tuning available upon request for a fee)

1 Kawai upright

1 Baldwin 7' grand piano

### Genie Lift

1 AWP-25S

### Lectern

1 available upon request

### Chairs & Tables

Available upon request, with advance notice

### Risers

4' x 8' Risers: 15 Risers adjustable to the following heights  
15 Risers @ 8" 8 Risers @ 16" 8 Risers @ 24" 15 Risers @ 32"

### Folding Choir Risers

6' 8" L x 1' 6" W Folded

18" Tread with 8" rise

Trapezoid shape, 6' across back and 4' 5 1/2" across front

3 step Choir Risers

5 units available

In semi-circle formation can accommodate 9 per unit.

## LOADING DOCK STAGE RIGHT

Located at NW corner of stage

Distance from stage: 24' 0"

(7.3M)

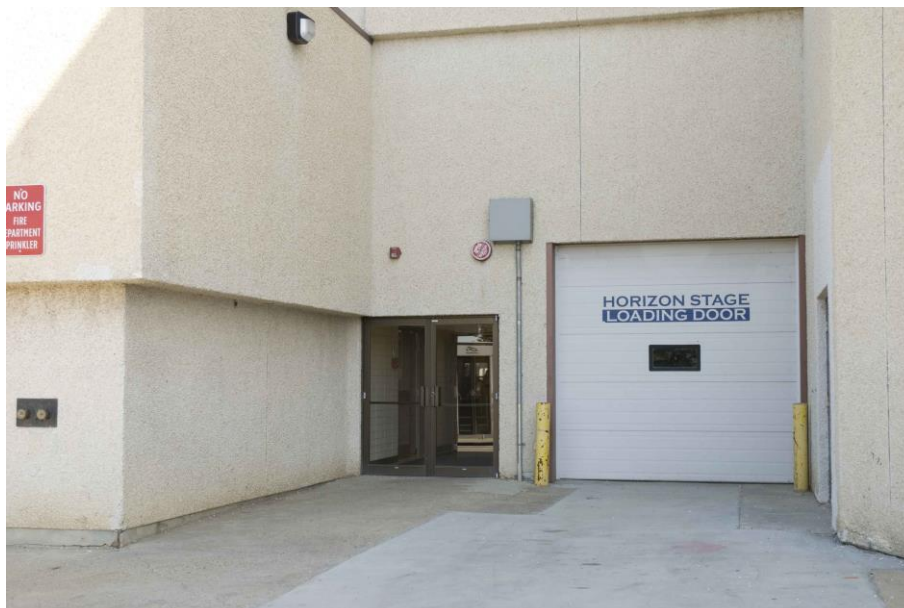
Loading door is at stage level

Door Dimensions: 9' 10" W x 9' 0" H

(3M X 3M)

No vehicles are permitted to remain in the loading dock during a show

Door is a manual roll up garage style door



## DRESSING ROOMS & BACKSTAGE FACILITIES

### Men's Dressing Room

Located stage right at stage level

13' 9" W x 23' 0" L

(4.2M X 7M)

Seats 12 performers comfortably

Equipped with 2 washrooms, no shower facilities

### Women's Dressing Room

Located stage left at stage level

13' 9" W x 25' 3" L

(4.2M X 7.7M)

Seats 14 performers comfortably

Equipped with 2 washrooms, no shower facilities



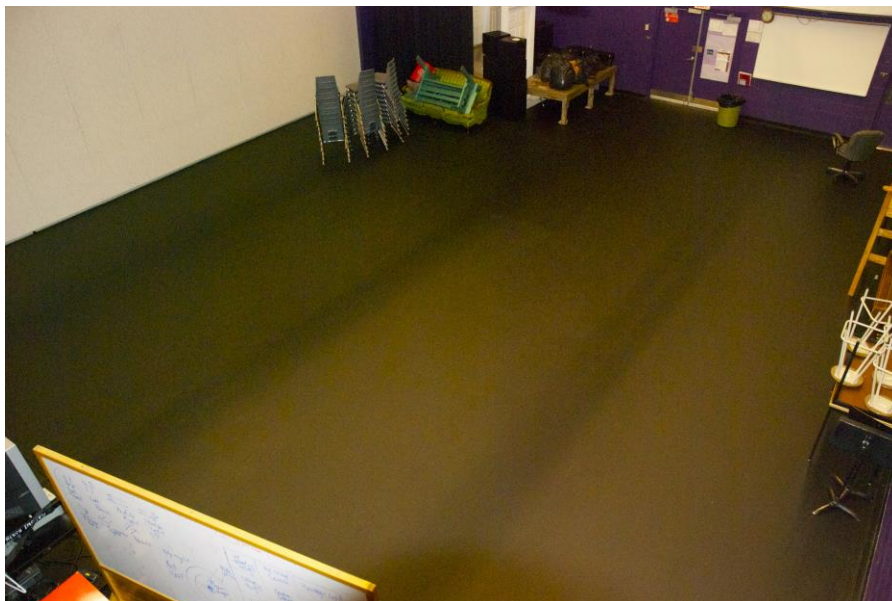
### Green Room

Located behind the stage and between the dressing rooms

Used by high school as a drama room year round

Available upon request only

Functions as a crossover



## LIGHTING EQUIPMENT

The following equipment is permanently located and cannot be removed

Note: This equipment is part of the permanent "House Plot"

### Front of House

FOH 1	6	575 Watt ETC 25° - 50° Zoom Source 4 Junior
	8	750 Watt ETC 25° - 50° Source 4 Zoom
	3	ETC 25° - 45° PARNel w/ Chroma Q 16 frame gel scroller (Rosco Rock n Roll)
	2	ETC Colorsource PAR Deep Blue w/Medium (45°) Diffuser and Half Top Hat
	1	ETC Colorsource PAR Deep Blue w/Medium (45°) Diffuser
	2	ETC Colorsource PAR Deep Blue w/Narrow Oval Diffuser
	2	Martin Mac 700 Profile (Hung below the catwalk)
FOH 2	8	750 Watt ETC 25° - 50° Source 4 Zoom
	2	ETC 25° - 45° PARNel w/ Chroma Q 16 frame gel scroller (Rosco Rock n Roll)
	2	ETC Colorsource PAR Deep Blue w/Medium (45°) Diffuser and Half Top Hat
	2	Martin Mac 700 Profile (Hung below the catwalk)
FOH 3	6	750 Watt ETC 25° - 50° Source 4 Zoom
FOH 4	4	750 Watt ETC 25° - 50° Source 4 Zoom
	2	155 Watt (Source 4WRD LED) ETC 19° Source 4 w/ Rosco iCue moving mirrors & City Theatrical Iris

### On Stage

LX 1	4	575 Watt ETC 25° - 50° Zoom Source 4 Junior
	4	ETC 25° - 45° PARNel w/ Chroma Q 16 frame gel scroller (Rosco Rock n Roll)
	4	ETC Colorsource PAR Deep Blue w/Medium (45°) Diffuser
	2	ETC Colorsource PAR Deep Blue w/Narrow Oval Diffuser
	2	Martin Mac 700 Profile
LX 2	4	575 Watt ETC 25° - 50° Zoom Source 4 Junior
	4	ETC 25° - 45° PARNel w/ Chroma Q 16 frame gel scroller (Rosco Rock n Roll)
	4	ETC Colorsource PAR Deep Blue w/Medium (45°) Diffuser
	2	ETC Colorsource PAR Deep Blue w/Narrow Oval Diffuser
	2	Martin Mac 700 Profile
Cyc LX	5	Chroma-Q Color Force 72 (Hung upstage of the cyc)

### Stock Hang

The following equipment is semi-permanent but may be relocated

If the hang is altered, it must be restored to the "House Hang" at the expense of the lessee.

FOH 1	2	575 Watt ETC 25° - 50° Zoom Source 4
FOH 2	2	750 Watt ETC 15° - 30° Source 4 Zoom
	2	ETC ColorSource Spot 36°
FOH 3	2	750 Watt ETC 15° - 30° Source 4 Zoom
	2	750 Watt ETC 25° - 50° Source 4 Zoom
	4	ETC ColorSource Spot 36°
	4	575 Watt ETC 25° - 50° Zoom Source 4 Junior
LX 1	5	575 Watt ETC 25° - 50° Zoom Source 4 Junior
LX 2	1	575 Watt ETC 25° - 50° Zoom Source 4 Junior
LX 3	4	575 Watt ETC 25° - 50° Zoom Source 4 Junior
	4	ETC Colorsource PAR Deep Blue
Other	4	750 Watt ETC 10° Source 4 (Hung outside booth, near FOH 4)
	5	Chroma-Q Color Force 72 (Used for ground row, upstage of the cyc)

## LIGHTING EQUIPMENT CONTINUED

The following equipment is available at the licensee's request  
Quantities may vary; please confirm before your event  
Additional expenses may apply

### Hazer

- 1 Antari X-310D Fazer

### Lekos

- 2 750 Watt ETC 15° - 30° Source 4 Zoom
- 5 750 Watt ETC 25° - 50° Source 4 Zoom
- 6 575 Watt ETC 25° - 50° Zoom Source 4 Junior
- 2 750 Watt ETC 5° Source 4
- 2 ETC 5° Source 4 Lens Barrel
- 2 ETC 26° Source 4 Lens Barrel

### Fresnels

- 16 ETC 25° - 45° PARNel
- 2 ETC Colorsources PAR Deep Blue

### Mirror Ball

- 1 20" Mirror Ball
- 1 ADJ MB DMX II Heavy Duty rotating motor

### Color Blasts

- 1 PDS750 Power supply unit for up to 12 Color Blasts
- 8 Chroma Q Color Blast 12 TR

### Iris

- 13 drop in iris for ETC Source 4 Lekos
- 2 drop in iris for ETC Source 4 Jr. Lekos

### Music Stand Lights

Limited number available upon request

### Gobo Rotator

- 1 Apollo Smart Move DMX Rotator

### Projector

- 1 Hitachi CP-WU8460 (Located beneath FOH 2)
- 2 NEC NP-P502WL-2 Laser projectors (Located beneath FOH 1)

### Follow Spots

- 2 Altman Comet

## **MISCELLANEOUS LIGHTING INFORMATION**

### **Circuits and Control**

Dimmer per circuit

Please see stage lighting stock hang drawings for circuit numbers and locations

All are 2.4 KW circuits and are 3 wire #L5-20 20 amp/125 volt twist-lock connectors

Except for the following, all circuits are located on second level catwalk and cabled onto LX pipes:

6 Circuits located on rear wall, at either side of the stage

2 Circuits located in FOH audio mix position

### **Dimmers**

192 ETC Sensor Dimmers 2.4 KW

### **Console**

ETC Eos with attached 2 x 20 fader wing, permanently located in control booth

### **Road Power Availability**

100 amps, 3 phase, 4 wire located in stage right loading dock



# SOUND SYSTEM AND COMMUNICATIONS



## FOH Mix Position

There is a House Audio Booth located at the rear of the house

Console: Yamaha M7CL 48 channel console  
Outboard Rack: 1 Tascam CD-500  
1 Tascam CD-RW 901SL

## Booth Mix Position

Console: Yamaha TF1-16  
Outboard Rack: 1 Tascam CD-450  
2 Radial JPC MK3 Stereo DI

## Speaker System

Left & Right Cluster: 2 Meyer UPJ-1P  
Center Cluster: 3 Meyer UPJ-1P  
2 Meyer USW-1P Subs  
Front Fill 2 Meyer UP1 on sticks (available upon request, with sufficient notice)

## Monitor System

Console: Allen & Heath GL4 monitor console available at additional fee.  
Power Amps: 4 QSC 1500  
Wedges: 8 EAW SM200ih

## Microphones

Shure 5 SM57  
10 SM58  
1 Beta 57A  
4 Beta 58A  
1 PGDMK6 Drum Mic Kit  
Electro-Voice 2 RE-10  
2 635A  
2 ND 408  
2 ND 257

Sennheiser	2 421
AKG	4 535 1 D112 2 C519
Audio Technica	2 AT2035
2 C-Ducer C tape	

## DIs

Rapco	4 db 100 4 db-1 2 LTI 100
LA Audio	4 D12

## Wireless

Shure	4 Four Channel ULXD4Q receivers 5 ULXD2 Beta 58 handheld transmitters 16 ULX-D1 bodypack transmitters 16 Apex 575 Headset condenser microphone 2 WL51 Lavalier microphone 1 AKG C 420 Head-worn microphone 2 Countryman E6i Omnidirectional earset microphone
-------	---

## Shure Wireless Microphone Frequencies

Please contact technicians for information.

## Intercom

Clear-Com wired system to all key production locations  
Clear-Com Tempest 2400 wireless communication system with 4 units

## Program Sound

Program sound to dressing rooms, green room and lobby  
Available upon request

## Assisted Hearing

Sennheiser SI 1015 Infrared Unit  
10 RI 150 mono headsets

## Snakes

2 50' 8 channel  
1 75' 8 channel

## Stands

25 Assorted tall boom tripod mic stands  
7 Assorted short boom tripod mic stands

## Miscellaneous

Audio patch box is located on the stage right wall and contains 48 channels and 9 returns

## MISCELLANEOUS

### Notes:

Contact the Technical Services Coordinator for updates of equipment (new acquisitions, under repair, etc.)

Rental equipment can be arranged with reasonable notice

Scale drawings are available upon request

Front of house staff available upon request. Staff supplied by the Horizon Stagelighters

Licensed bar in lobby

Theatre and Lounge area smoke free

### Usual Performance Times:

Evening - 7:30 pm    Matinee - 2:00 pm    Schools - 10:00 am/1:30 pm

### Travel Information

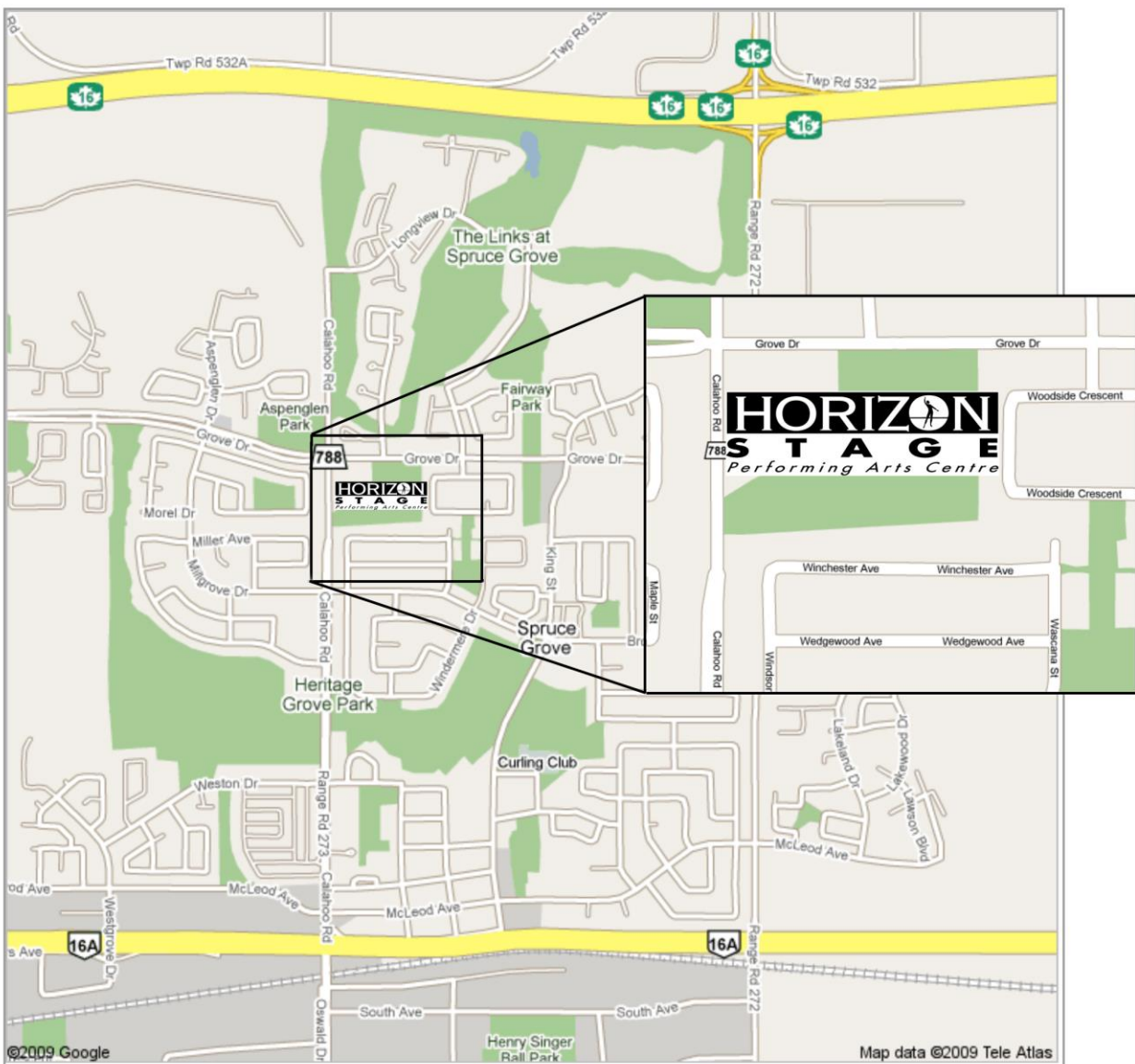
Edmonton International Airport (YEG) is 45 minutes away

### Address

Attached to Spruce Grove Composite High School

1001 Calahoo Road

Spruce Grove, AB Canada



## CONTACT SHEET

### Mailing Address

Horizon Stage  
c/o City of Spruce Grove  
315 Jespersen Avenue  
Spruce Grove, AB  
T7X 3E8

### Administration and City Hall Ticket Centre

Located in Spruce Grove City Hall  
315 Jespersen Avenue  
Spruce Grove, AB Canada  
Enter through the west doors

### Theatre Manager

Brandi Watson (780) 962-7634 (ext 114)  
C: (780) 218-5029

[bwatson@sprucegrove.org](mailto:bwatson@sprucegrove.org)

### Theatre Marketing Coordinator

Kerri Gibson Loranger (780) 962-7634 (ext 170)

[kgibson@sprucegrove.org](mailto:kgibson@sprucegrove.org)

### Senior Administrative Assistant - Culture

Karen Smutt (780) 962-7631

[ksmutt@sprucegrove.org](mailto:ksmutt@sprucegrove.org)

### Cultural Services Administrator

David Schuster (780) 962-8995

[dschuster@sprucegrove.org](mailto:dschuster@sprucegrove.org)

### Technical Service Supervisor

Don Waddle (780) 962-4404  
C: (780) 887-6058

[dwaddle@sprucegrove.org](mailto:dwaddle@sprucegrove.org)

### Theatre Technicians

Morris McClelland (780) 962-4404  
C: (780) 991-7976  
Brendan Nearey (780) 962-4404

[mmcclelland@sprucegrove.org](mailto:mmcclelland@sprucegrove.org)

[bnearey@sprucegrove.org](mailto:bnearey@sprucegrove.org)